



A Sea Of Technology

Ship and Offshore Design
Engineering Services
Project Management
Analysis
Software
Training
Integrated Support



HEAD OFFICE

SeaTech Solutions International (S) Pte Ltd
 8 Boonlay Way #09-09
 8@TradeHub 21, Singapore 609964
Singapore

Tel : 65-68201130
 Fax : 65-68201126
 Email: info@seatechsolutions.com



OUR SERVICES

Ship and Offshore Design

- Baseline Conceptual/ Design & Studies
- Mechanical
- Electrical & Electronics
- Hull Design & Naval Architecture
- Outfitting

Engineering Services

- Third party investigation
- Condition surveys
- Shipyard infrastructure & facilities studies
- Feed engineering

Project Management

Analysis

- Stability Analysis
- Structural Analysis
- Hydrodynamic Analysis
- Mooring Analysis
- Block Turning & Lifting Analysis

Software

- ERP
- CRM
- Ship Building-CAD/CAM/CAE
- Load masters

Training

- FORAN Training
- Resident Training
 - Naval Architects /Shipbuilding Engineers
- On-site course
 - Tailor specific Shipyard
- Refresher course
 - Retrained in new technology
- Short-term course
 - Specialize topics suit to shipyards

Integrated Support

- Assistance in tenders, enquiries & estimates
- Production Information.
- Construction supervision and quality control
- Interior work/Graphic Design
- Advice with regards to funding
- Value Analysis/ Cost estimating & Market research
- Project & Concept Planning

SATELLITE OFFICES



SeaTech Bangladesh Ltd
 Department of Naval Architecture & Marine Engineering
 Dhaka-1000
Bangladesh
 Tel : 88 02 9571410-11
 Fax : 88 02 957 1409
 Email : info.dhaka@gmail.com



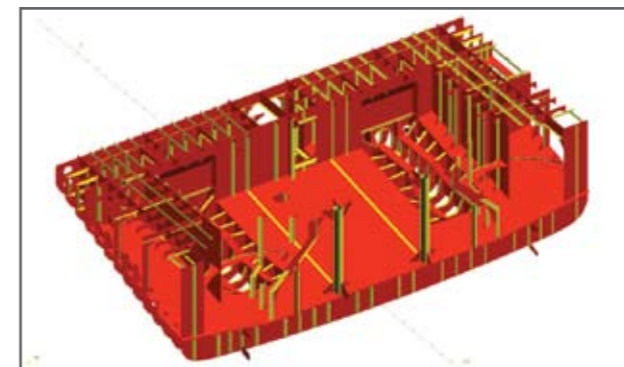
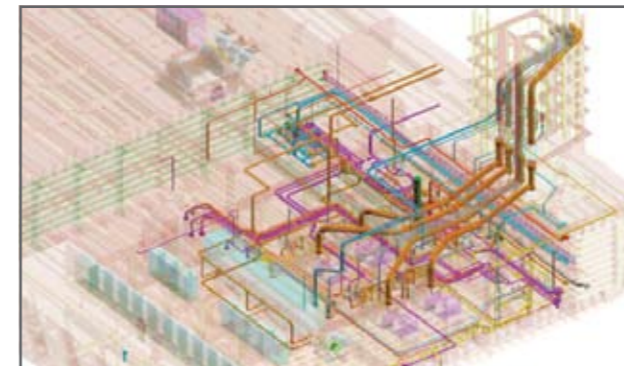
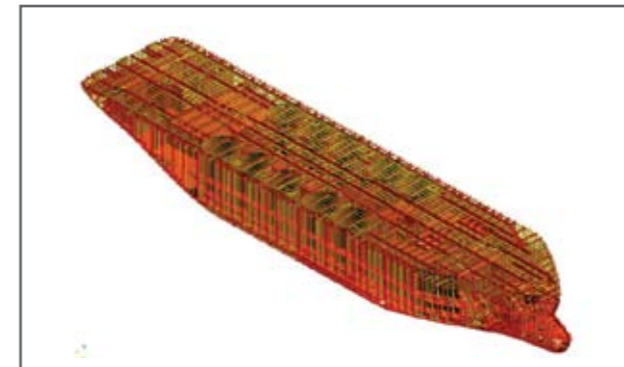
SeaTech Marine Solutions Pte Ltd
 02, Thomas Compound, Holy Cross Road, I.C.Colony,
 Borivali (W)
 Mumbai 400103
India
 Tel : 91-22-2894 5236
 Email : info.mumbai@seatechsolutions.com



SeaTech Solutions International (China) Pte Ltd
 15A , Building B, 299 (Fudu Garden) , Xuanhua Rd ,
 Shanghai 200050
China
 Tel : 8621-62405032
 Fax : 8621-6240 5032
 Email : info.shanghai@seatechsolutions.com



SeaTech Marine Co.Ltd
 47/101 Mu. 5 Karnjanapisek Road, Bangkae
 Bangkok 10160
Thailand
 Tel : 6602-455-9537-9
 Fax : 6602-455 9800
 Email : seatechmarine@gmail.com



TUGS

This 32m ASD tug is powered by twin diesel engines to give a bollard pull of 65 tons. The free running speed recorded during trials was 12 knots.



This Azimuth Stern Drive Tug is powered by two(2) medium sized diesel engines, each of 1650 kW to give a bollard pull of 46 tons and free running speed of 12 knots.

OFFSHORE VESSELS

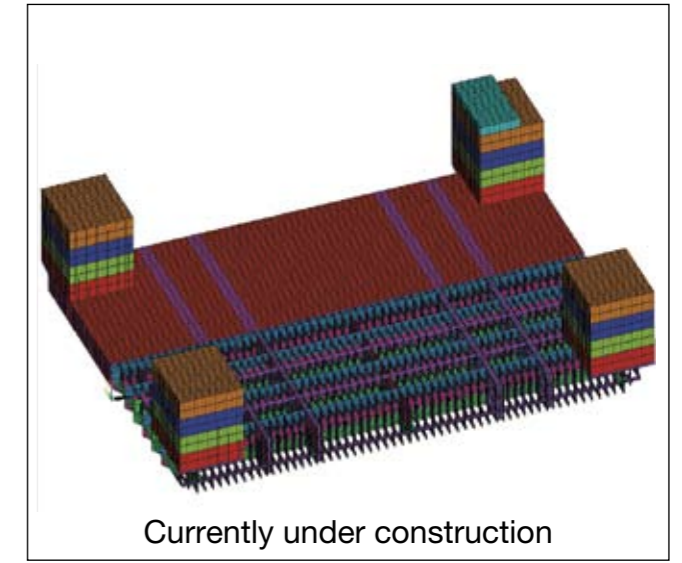
The above multi-purpose DSV / Construction vessel designed by SeaTech is able to carry out a wide variety of underwater construction, dive support services including pipeline and offshore platform inspection and pipeline installation, ROV operations, cable laying and topside construction.

The 83.5m diesel electric vessel is powered by 5 diesel generators, each producing 1544 kW (with one standby). Built to ABS rules, it also complies with the SPS code and provides European style accommodation for 80 persons.



TANKERS

VESSEL CONVERSIONS & MORE...





The SeaTech Group of companies and associate companies specialize in Marine/Offshore Conversions Design and Project Management, Engineering and Analysis, Marine software and Training services.

In addition, SeaTech also provides services in the development of projects and other integrated support services, such as concept planning, tendering, enquiries and estimates, supervision, quality control and certain aspects of financing.

SeaTech Solutions International Pte Ltd was established in Singapore in 2000 and subsequently branched out in the region establishing companies in Thailand, India, China and Bangladesh.

SeaTech has a diversified portfolio of proven designs, analysis and related services of more than 190 projects to more than 70 companies located all over the world.

SeaTech's strength lies in its team of highly experienced and skilled engineers covering all disciplines of the marine and offshore industry. In its Corporate philosophy of **"MOVE AS ONE"**, the Group has embarked on a growth strategy to expand & integrate more related services and technologies in order to serve its clientele more effectively and completely.

